



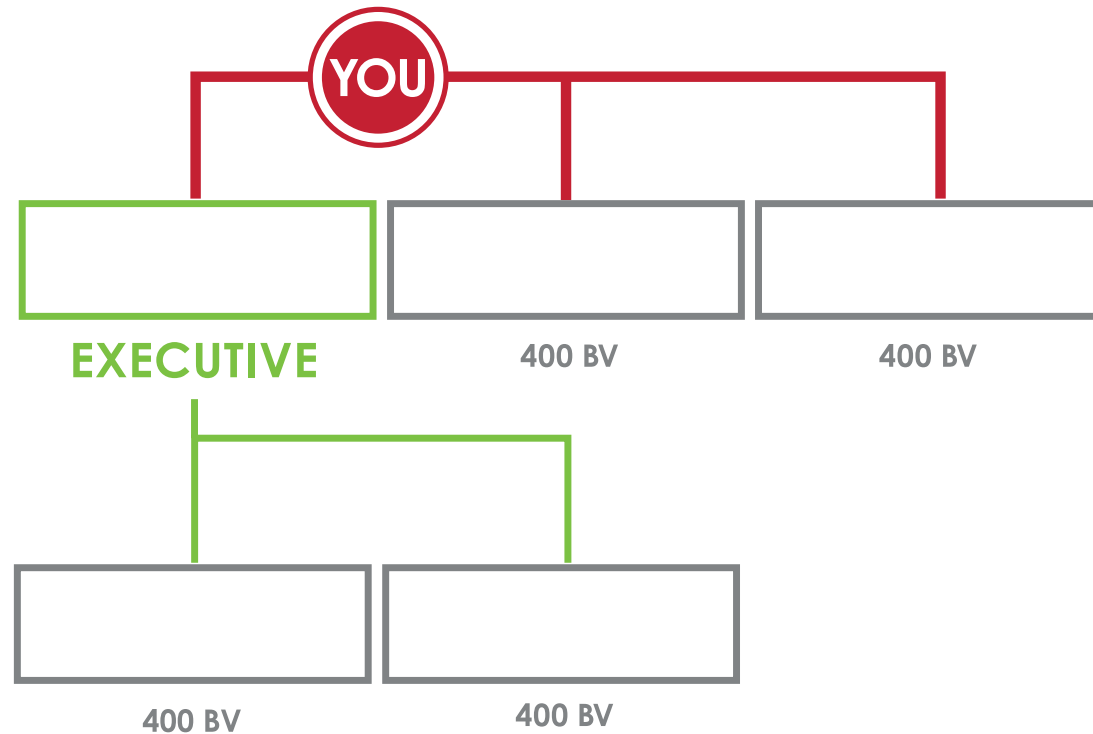
Ruby Executive



AVERAGE EARNINGS:
\$599 / MONTH*

Requirements: 1 Executive, 2 Qualified Legs

Earnings from your team's activity: 10% on your first two levels, 5% on your third and fourth levels**



*Average monthly earnings by rank are representative of July – December 2010 earnings of Independent Distributors at each particular rank, divided by the total Independent Distributors at each rank, respectively, at year end 2010, divided by 6 months. Distributors who did not receive earnings or joined after July 1, 2010 are not included in these calculations. The earnings of any It Works! Independent Distributor contained in this chart are not necessarily representative of the income, if any, that an It Works! Independent Distributor can or will earn through participation in the It Works! Compensation Plan. These figures should not be considered as guarantees or projections of your actual earnings or profits. Success with It Works! occurs only from successful sales efforts, which requires hard work, diligence, and leadership. Your success will depend upon how effectively you exercise these qualities.

**See Compensation Plan for full details. Must be Active & Qualified with \$150 PBV or \$80 BV autoship.